



Super Heavy Forklift

Big challenges made easy
DCG600-850



Ready to take on your heaviest loads

Meet the most powerful range of lifters, the Kalmar Super Heavy Forklifts.

Capable of lifting loads from 60 up to 85 tonnes, they can handle your toughest loads with ease. Ideal for steel mills, foundry, wind turbine components and sub-sections, precast concrete or other heavy lifting applications and industries.

Quality you can trust

With over 100,000 built since 1949, Kalmar forklifts are known for their great build quality and reliability. With less moving parts, easily accessible servicing points and industry leading maintenance intervals you will experience less downtime and higher availability rates. Coupled with Kalmar's global support and service network, plus long warranty periods, you will have a machine you can rely on.

Highly productive

No matter what you are lifting, the new Kalmar Super Heavy Forklift will do it efficiently, effectively and safely. It can lift the heaviest loads without compromising its maneuverability, agility or the safety and comfort of your operator. With a highly efficient and powerful driveline, you can expect a forklift that will become a central part of your logistics chain.

Safety in focus

Kalmar's range of diesel powered 60-85 tonnes forklift trucks offer highly responsive handling and superior visibility from the cabin, helping to keep your driver safe and in control at all times. Your drivers and co-workers will also benefit from the reduced noise and vibrations with a smooth and diesel powertrain. There are also a large range of safety options available that can further enhance the safety of your equipment and the drivers operating them.

A full range of diesel powered forklifts

Kalmar has offered an extensive range of diesel powered forklift trucks since the 1950's with over 100,000 units sold. Kalmar offer 4 diesel ranges, starting with 10-18T (medium), 18-33T (heavy), 38-54T (big heavy) and the giants 60-85T (super heavy). We can work with you to configure a solution that fits exactly your requirements.

Four good reasons to choose Kalmar

- Highest productivity
- Trusted and reliable partner
- Better total cost of ownership
- Great ergonomics, visibility and safety.

It is no surprise that customer survey results coincide with Kalmar core values. After all, we listen attentively to customers when designing and developing our forklifts. Looking at the big picture, adding up things that truly matter, it will always pay off to choose Kalmar.



Handle your toughest loads with ease.



Built for maximum productivity

Your Kalmar forklift will always deliver what your operations require. With Power Mode activated, operators will have the power necessary to go all-in at every instant and work with maximum productivity. Pushing it hard, while ensuring best-in-class fine-manoeuving.

Our Cummins and Volvo engines are powerful, yet highly fuel efficient. You have a choice of engines which are compliant with EU Stage IIIA / EPA Tier 3 (Cummins) or EU Stage V / EPA Tier 4-Final (Cummins & Volvo).

All of our heavy forklifts come fitted with load sensing hydraulics (power-on-demand) as standard. The variable pumps automatically sense the load in every operation and adjust the oil flow accordingly, allowing

for faster lifting cycles up to 40% while reducing fuel consumption. This will help to improve your productivity as you can do more lifts per hour.

Many operators testify to the forklift's improved operational capabilities, especially when fine manoeuvring, such as side-shift and fork positioning. Also, the lowering speed has been increased, preparing the machine faster for the next lift.

Eco Drive Modes

Choose between three different drive modes, each optimised to meet your operational requirements. The forklift can be adapted to every task at hand, shifting many times during the day. The operator easily shifts between modes by using the cabin display screen.

Power

Brings out the maximum performance of your machine, allowing you to increase the number of tonnes moved per hour.

Normal

Balances power and economy to optimise profitability and reduce fuel consumption by up to 15%.

Economy

If total cost of operations outweighs the need for performance, Economy Mode reduces fuel consumption by up to 25%.

Save up to **15%**

Save up to **25%**

Reducing lifetime costs

Purchase price is only one of many factors affecting total cost of ownership. In fact, price is a minor cost factor looking over the lifetime of your forklift. What truly matters in the long run is cost control and operational efficiency – and that will show clearly on your bottom line.

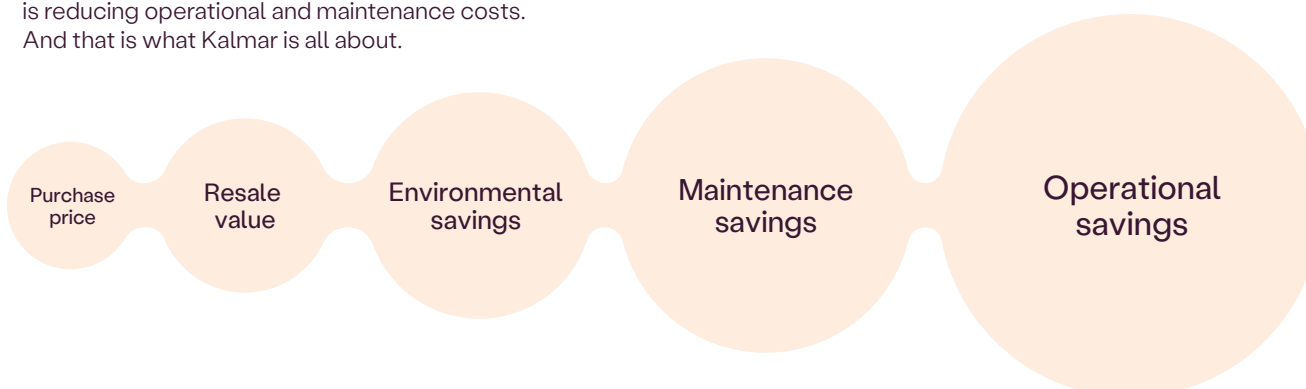
Compared to our previous model, the new DCG600-850 uses up to 15% less fuel in standard configuration. Add Kalmar's renowned product quality and reliability, increasing efficiency and uptime, and you see the true value of Kalmar.

The forklift's variable pumps and fan are automatically adjusted to the precise need. The pumps and the fan are only operated at full speed when necessary, reducing fuel consumption and noise. Another cost saving feature is Economy mode, an engine setting available to the operator from within the cabin, which further lowers fuel consumption.

The risk of unplanned standstills has been reduced due to intelligent error detection built into the new control system, which accurately pinpoints potential problems in clear text on a display in the cabin.

Lifetime savings

Purchase price represents only a small part of the total cost of ownership. What matters in the long run is reducing operational and maintenance costs. And that is what Kalmar is all about.



Cost saving features



Powerful and fuel efficient diesel engines.
The latest EU Stage V (EPA Tier 4-Final) compliant engines from Cummins and Volvo reduce fuel consumption by **up to 5%**.



Standard with Eco Drive Modes [EDM].
When optimising the setting with the EDM, the fuel consumption can be reduced by **up to 25%**.



Energy efficient sub systems.
Optimised load-sensing hydraulics with piston pumps and variable cooling fan allows for savings **up to 10%**.



Increased uptime.
Longer service intervals and improved problem detection reduce downtime.

Total lifetime savings.
Adding all energy saving features, savings **up to 40%** are possible.



Total lifetime savings of up to 40% are possible.

Designed for the driver

Ergonomically designed

Kalmar Forklifts come fitted with our ergonomically designed EGO cabin. With slim line a-pillars, adjustable seating, steering wheel and control panel, your drivers will benefit from a superior operating environment and visibility.



More comfortable

With a choice of comfortable driver seats, a fault safe pedal system and powerful Electronic Climate Control system with smarter controls your operator will benefit from improved ventilation heating and cooling, plus a cabin with superior comfort and lowest noise level inside and outside.



Easy to operate

Our diesel powered forklift trucks give you a wide choice electric-servo lifting levers, dual lever joystick or single joystick, an electronically adjustable work console and side tilting steering wheel. All designed to make operating your forklift easier and more efficient to operate.



Extra smart

Our intuitive user interface combines visibility, sound and touch to create a perfectly balanced operating environment with an intelligent colour display at its heart. Advanced diagnostics, and smart settings allow improved operational control.

Choose your own upgrade options



Reverse Warning System (RWS). Knowing what's going on behind you is critical when other personnel are present. Four rear sensors and a reversing camera relay real-time information to an in-cabin display, alerting the driver to any dangers, increasing personnel and driver safety.



Heat Protection Package. To protect your machine and operator from extreme heat generated in foundries, where molten metal can reach 2000°C. All hoses in the mast and carriage are heat protected and an extra windshield is fitted to protect the cabin from splashes from the vat.



Alco-Lock. To ensure your driver is at their best when operating your equipment you can install an Alco-Lock system. This system makes sure that the driver meets alcohol blood level standards before being able to start the machine, much like a breathalyser.



Reversible Engine Fan. If your forklift needs to operate in a dirty and dusty environment then a reversible fan can help keep your driveline cleaner and operating optimally.



Reverse Beeper System. When your staff are working side-by-side with moving vehicles there is always a safety risk. Installing a reverse beeper system provides a clear acoustic alert when the machine is reversing so personnel can make sure they stay out of harm's way at all times.



Tyre Pressure Monitoring System. Helps to reduce wear and tear on tyres which results in reduced fuel consumption. Bluetooth sensors keep the driver advised of the condition of the tyres at all times. Active care of your tyres can result in a 10-40% increase in tyre life and up to a 10% decrease in fuel consumption.



Additional lighting. If you have to operate your machine at night, extra lighting can bring greater operational visibility and safety for personnel. You can choose additional LED working lamps on your cabin roof, on the mast or placed at the front or rear of your forklift.

What do you need to lift?

Choose between a wide range of lifting masts, carriages, forks and attachments. We offer complete solutions whereby we assemble the attachment in the factory and integrate it with the forklift's other functions.

Metal industry

Our heavy diesel powered forklifts can lift, stack and transport metal slabs, blooms and billets or plates, coils, bars and pipes, which is made even easier and safer when you use speciality attachments including magnets, clamps, grippers, coil rams, forks or slings fitted to the lifting equipment. Also raw material supplies and recycling can be handled.



Concrete, energy and heavy industry

Flat, round or bulky concrete sections, wave-breakers, bricks and rocks can be lifted with ease, as can hardware for the energy sector: like supplies for oil & gas offshore sites, or biomass and nuclear plants. Heavy loads for the wind turbines and their sub contractors; producing foundations, mono-piles, tower sections, nacelles, drive units and blades can also be lifted and moved safely and efficiently.



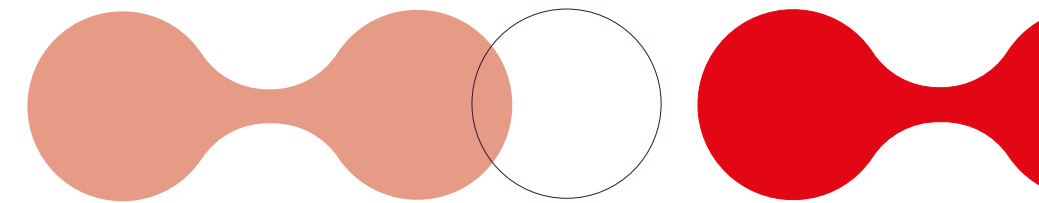
Special and customised

Kalmar has a long tradition of delivering highly customised solutions that solve our customers' individual handling demands and challenges. Using our wide range of solutions, with tailor-made specifications and dedicated forklifts that will do the job with precision, efficiency and with low total cost of ownership (TCO).



Logistics and stevedoring

Whether you're moving containers, handling various types of breakbulk, heavy project cargo or RoRo applications - Kalmar can deliver the efficient and safe material handling solution that you need.



Safety fitted as standard

All Kalmar equipment is compliant with EN 1175:2020.

At Kalmar, the safety of people working with our machines is always at the top of our minds, which is why meeting global safety standards is important to us. The safety standard EN 1175:2020, which sets the electrical and electronic component standards for industrial trucks, has been updated to improve the safety of these machines while in operation. This update is valid from April 2023. All Kalmar counter balanced machines, including reachstackers, empty container handlers and forklifts have been updated to meet this new standard to ensure that working with a Kalmar machine is as safe as it can be.

For Kalmar, the safety of your drivers and maintenance staff is of critical importance, which is why our machines come with many more safety features fitted as standard than other machines available in the market.

The features listed here come fitted as standard on all Kalmar machines. You can enhance your employees' safety further by fitting your machine with our additional safety options listed on the following pages.



2-point seat belt. Ensures that your driver is safe and secure while operating our equipment, all Kalmar machines are equipped with an adjustable 2-point seat belt system.



3-point Contact System. Makes sure your drivers are safe when entering or exiting our equipment. All machines are fitted with steps and handles to ensure they can always maintain three points of contact with the vehicle, helping to keep them safe and preventing incidental injuries.



Double brake pedals. To avoid driver leg fatigue, every machine is equipped with dual brake pedals which require only heel to toe movements, allowing the driver to move his foot between the accelerator and brake pedals without having to move their leg.



Steps with anti-slip protection. To reduce the risk of your driver slipping or falling on our equipment, all entering and exiting points are fitted with non-slip surfaces giving them extra grip, so your drivers stay safe.



Control System. All our equipment is fitted with an electronic Control System for monitoring the machine's different functions while in operation, helping to keep your driver fully informed at all times with up-to-date Operating, Event Controlled and Error Code information.



Operating information. Our equipment's Control System provides several operating information menus, which give your operator and maintenance personnel a great insight into the on-going performance of the machine, allowing them to keep it running optimally.



Event controlled information. Provided through the Overload Protection System to warn the driver through the equipment's Control System if their load exceeds the specified safety limits.



Error code information. Should there be any issue with your equipment while in operation, the electronic control system will immediately alert your driver with the appropriate error code, so they know exactly what is going on and can take appropriate action.



Display. Cabins are fitted with a large easy to read display which keeps your drivers fully aware of the machine's on-going performance and any maintenance actions that need to be taken.



Control Breaker System for load handling.

All of our equipment is fitted with a Control Breaker System, which automatically shuts down the load handling system should a fault occur, until the fault has been corrected. Keeping your driver, equipment and load safe.



Operator Presence Detection System. Maintains the highest levels of safety for both the driver and pedestrians, as all our equipment is fitted with an alarm or visual indicator that comes on automatically if:

- The driver does not fasten their seat belt while in operation.
- The driver leaves their seat without engaging the parking brake.

In addition, if the driver leaves their seat while the machine is operational, the transmission is automatically shifted to neutral and load-handling functions are disabled.



Engine/transmission Protection and Warning Systems. Warning systems, designed to protect your machine's driveline in case of higher than expected temperatures or a pressure build up, are standard on all equipment, avoiding unnecessary mechanical failures.



External reverse light. For the safety of others, all our equipment is equipped with external reversing lights that help the driver keep everyone informed that they are moving backwards.



LED lights. These come fitted as standard on all our equipment, providing better visibility when working in reduced light than halogen lights.



Neutral start switch. A neutral start switch means your driver can't start his machine while it is in gear, preventing any damage to the driveline and any uncontrolled equipment movements.



Protection against falling objects. Cabin roof windows on all our equipment are fitted with high strength materials which can withstand heavy blows, helping to protect your drivers from falling objects.



Good visibility. Kalmar cabins provide your drivers with excellent visibility, forwards, upwards, sideways and behind them to help them stay safe while in operation.



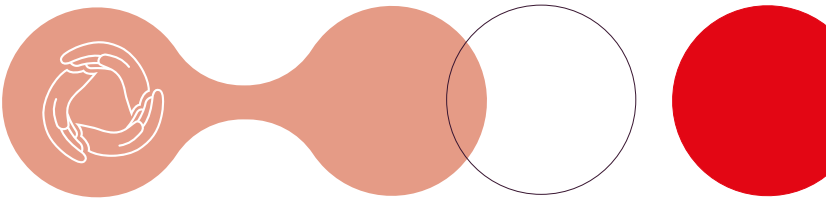
Keep moving with Kalmar Services

To keep your business moving Kalmar Services offers a range of services that can help you keep your equipment moving optimally.

Kalmar Care

Care that keeps your business moving.
With Kalmar Care you get a flexible service that's built around your business. Including, the experience and knowledge of Kalmar's dedicated staff, coupled with transparency and increased predictability of costs.

Kalmar Care is available in three different service models: our two customisable contracts – Essential Care and Complete Care – and our flexible solution On Demand Care.



Service models:



Essential Care

A maintenance solution to keep your equipment in an optimal condition.



Complete Care

A complete service solution providing piece of mind and maximum equipment uptime.



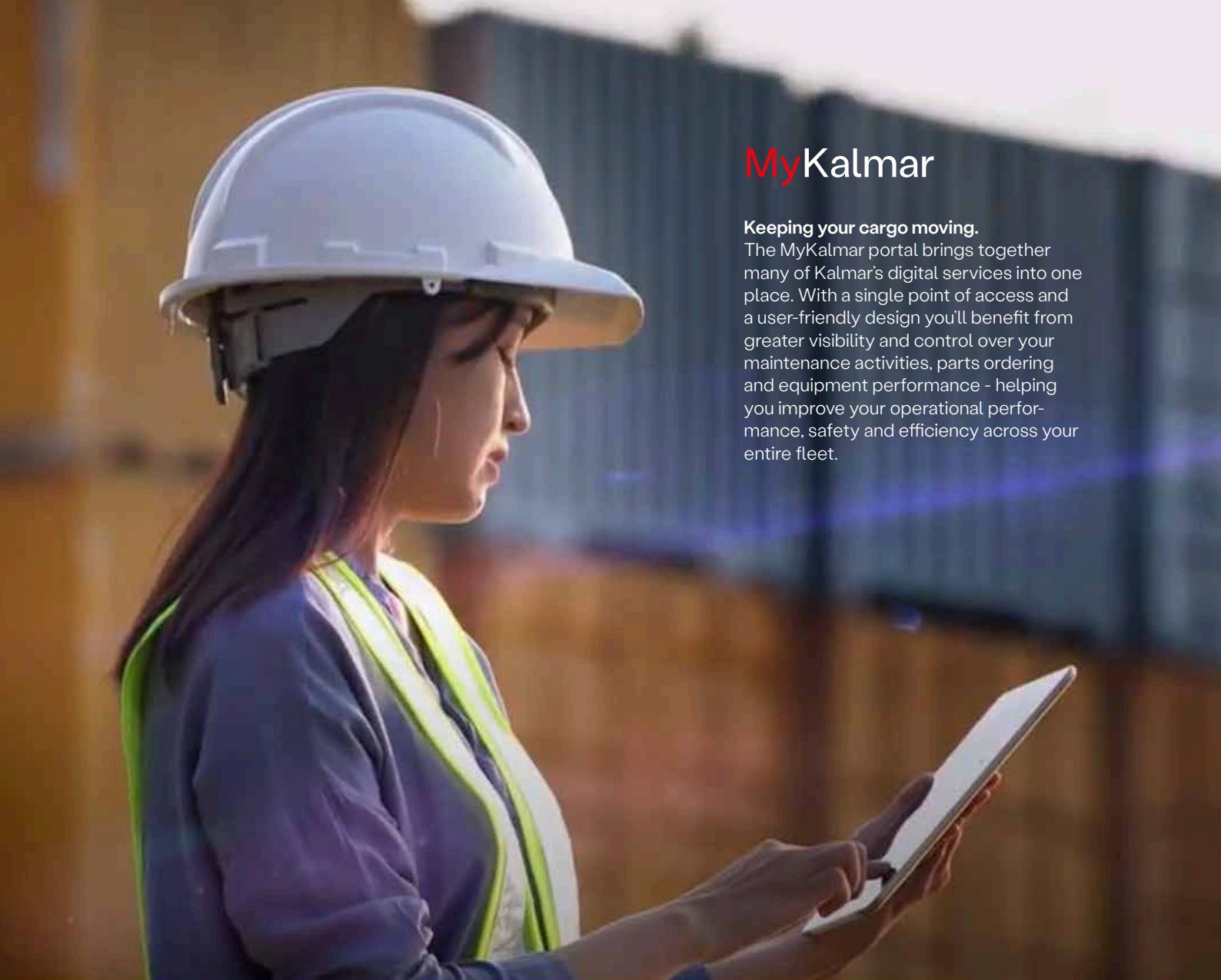
On Demand Care

Top-of-the-line service whenever you need it.

Maintenance Planning	●	●
Preventive Maintenance	●	●
Predictive Maintenance		●
Corrective Maintenance		●
Preventive Spare Parts	●	●
Corrective Spare Parts		●
Lubricants	●	●
MyKalmar	●	●
Kalmar Insight	●	●
Tyre Maintenance		●
Battery Maintenance		●

● Included ● Optional

Top-of-the-line service
whenever you need it



MyKalmar

Keeping your cargo moving.
The MyKalmar portal brings together many of Kalmar's digital services into one place. With a single point of access and a user-friendly design you'll benefit from greater visibility and control over your maintenance activities, parts ordering and equipment performance - helping you improve your operational performance, safety and efficiency across your entire fleet.

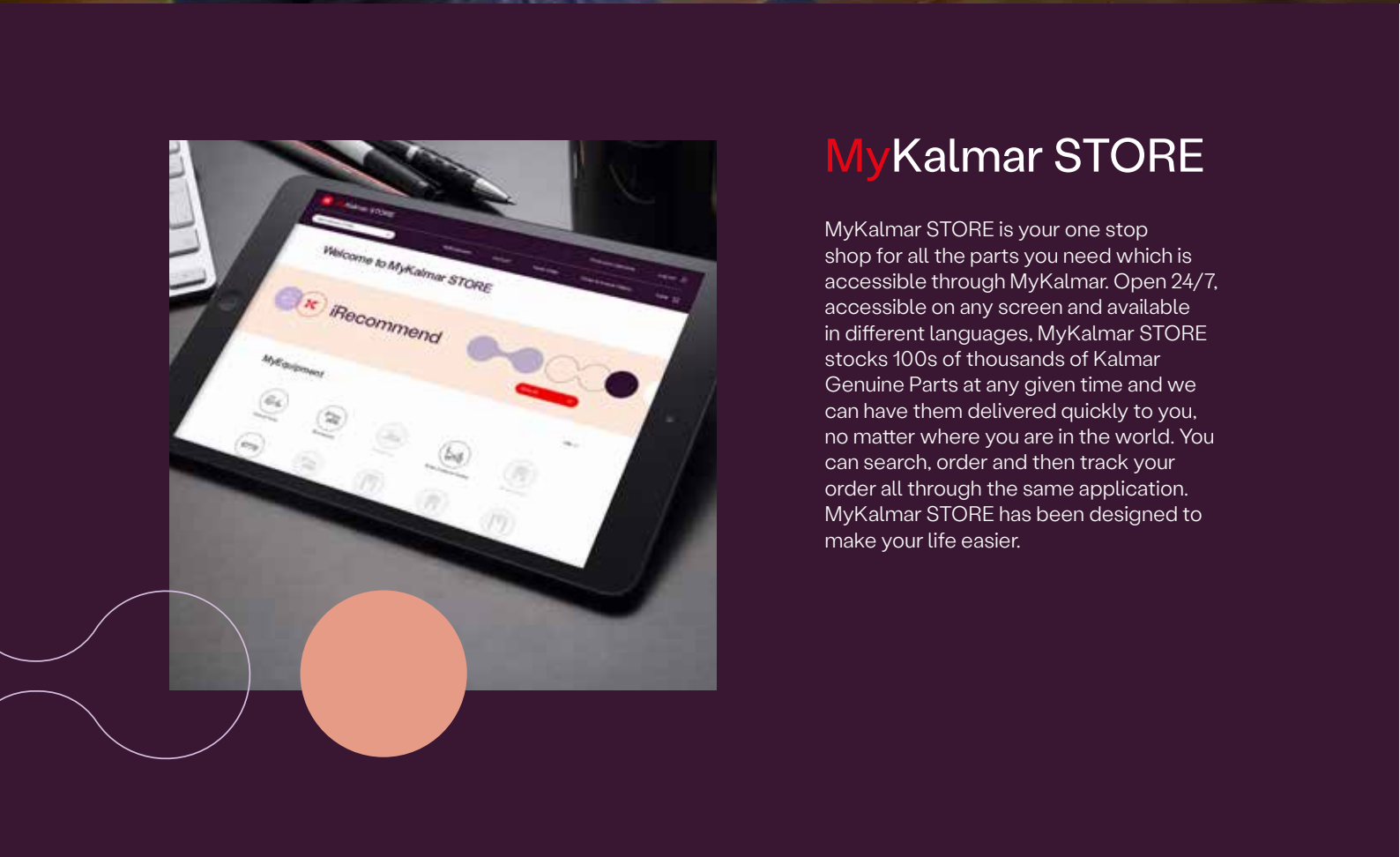
Kalmar Insight

Optimise your operations with Insight.
Kalmar Insight* is a performance management tool for cargo handling, which gives you an easy to use overview of your fleet operations, by aggregating data from multiple sources, including equipment built by other manufacturers. Review your entire fleet activities, schedule maintenance activities and order the required parts

automatically. All enabling you to take action on real-time information, that will help improve your overall operations immediately. Kalmar Insight comes fitted and ready to be activated in all new Kalmar equipment, it can also be retrofitted into existing Kalmar equipment or those built by other manufacturers.



*Installation costs and/or an annual subscription fee may apply.



MyKalmar STORE

MyKalmar STORE is your one stop shop for all the parts you need which is accessible through MyKalmar. Open 24/7, accessible on any screen and available in different languages, MyKalmar STORE stocks 100s of thousands of Kalmar Genuine Parts at any given time and we can have them delivered quickly to you, no matter where you are in the world. You can search, order and then track your order all through the same application. MyKalmar STORE has been designed to make your life easier.

Kalmar Training

Enhance your skills.
To get the most out of your new machine our training centre offers a range of courses for both your technicians and operators. Operators can be taught how to drive the machine for optimum performance and minimum waste, and to learn what needs to be checked daily for optimal safety. Technicians can be educated with the knowledge they need to keep your new equipment in top condition in a safe way. Courses are a mix of theory and hands-on experience.



Standard

Norms, standards and regulations according to:

- Machinery Directive 2006/42/EC
- Safety Industrial Trucks ISO 3691-1 + EN 16307-1
- Safety Low & High Lift Trucks ANSI / ITSDF B56.1
- Stability Masted Forklift Trucks ISO 22915-1, -2
- Electrics / Electronics Safety Standard EN 1175
- Electromagnetic Compatibility Directive 2014/30/EC
- Electromagnetic Compatibility Standard EN 12895
- Noise Emission Directive 2000/14/EC + 2005/88/EC
- Noise Emission Standard EN 12053
- CE-marking (EU/EEA)
- ANSI / ITSDF-marking Forklift Trucks (USA/CAN)
- AS-marking (Australia)
- UKCA-marking (UK)
- Supply of Machinery (Safety) Regulations 2008 (UK)

Chassis

- Strong, durable and welded box-beam heavy-duty chassis
- Powerful front end unit for drive axle and lift mast fixations
- Solid tilt cylinder fixations in chassis and mast
- Full access to the entire powertrain with tilting cabin
- Very good visibility in forward, up, sideways and rearwards
- Low cabin mounting for easy access on both sides
- Lifting eyes and anchor points (front & rear)
- Towing pin in rear counter weight

Body

- Strong and protective steel mudguards (front / rear)
- Long bottom step between the mudguards (anti-slip) on both sides
- Short access steps (6x) up to the cabin (anti-slip) on LHS
- Extra short access step (+1) on both sides
- Big rear view mirrors on front mudguards (2x) and in the mast (2x)
- Welded lamp brackets bolted on front mudguards (2x)
- Basic noise insulation kit of the forklift

Steer Axle (rear)

- Kalmar steer axle mounted dual pivot bearings
- Steer axle with mechanical side stops
- El-servo power steering with double acting cylinder
- Steer axle with narrow turning radius
- Steer links of 'dog-bone type' (easy to change)

Drive Axle (front)

- Kessler D111 planetary axle with differential drive
- Maintenance-free oil-cooled Wet Disc Brakes (WDB)
- Dual parking brake, spring loaded & hydraulic release
- High pressure filter (10 my) for the brakes (2x)
- Drive Axle DCG600-650, Width 4700 mm
- Drive Axle DCG750-850, Width 4850 mm

Wheels (tyres & rims)

- DCG600-650, Tyres 21.00 x 35" / rim 15.00 x 35/ 30
- DCG750-850, Tyres 24.00 x 35" / rim 17.00 x 35/ 30

Drivetrain

- Volvo D11, EU Stage 3 and 5 (EPA Tier 3 and 4F)
- 6-cylinder diesel engines with pre-heater
- High power & torque with low fuel consumption
- Engine monitoring and protection systems
- Automatic DANA transmissions LTE-30500
- Transmission monitoring and reverse protection
- Declutch function activated by the brake pressure
- Strong radiators for engine, transmission & brakes
- Muffler and exhaust pipe in steel
- Diesel tank (490 lit) incl. breather filter

Load-Sensing Hydraulics

- Load-sensing variable piston pumps (2x)
- Power-on-demand with high lift & lowering speeds
- Pumps for mast, spreader, brakes & steering
- Fixed pump for brake pressure & oil cooling
- Return filters for the work hydraulics (2x/10 mμ)

- Servo filter for the work hydraulics (10 mμ)
- Pressure filter for hydraulics / brakes (10 mμ)
- Power steering, power brakes & ORFS-couplings
- Hydraulic tank (550 lit), cooling, breather filter & ORFS-couplings
- Brake oil tank (130 lit), including oil cooling

Lift Mast

- Large selection of mast types and lifting heights.
- Duplex Standard; 2-stage mast, with free-visibility
- Strong, durable mast design (pair of cylinders/ chains)
- Heavy-duty mast profiles and strong cross members
- Mast with strong mast wheels, bearings & guide rollers
- Large shafts-bearing for mast, strong tilt fixation
- Mast tilt angles +10 / -10 deg (FW / BW)

Fork Carriage

- Large selection of fork carriages, types and optionals
- Carriage with strong wheels, bearings & guide rollers
- DCG650-850 Widths; 4400mm

Forks

- Large selection of fork dimensions, tapering and designs
- Cross sections; 300 x 180 mm / (DCG600-650)
- Cross sections; 300 x 210 mm / (DCG750-850)

Electrical System 24V

- Electric cabinet on chassis, battery box, batteries 24V & main power switch
- Electric cabinet, mounted behind driver
- 2 LED head lights on front fenders (one beam)
- 2 LED working lights on mast (first cross member)
- 2 LED working lights rear on counter weight (reverse)
- 4 blinker LED-lights (front - rear / left - right)
- 2 tail / 2 brake LED-lights rear in counter weight
- 2 position LED-lights on each side of the truck
- 2 flashing LED-brake lights (when reversing)
- 1 rotating warning LED-beacon
- Buzzer when reversing (reverse alarm)

Cabin EGO

Structure

- Spacious, modern cabin with great ergonomy level
- Strong profiles, pillars and cross members
- FOPS certified drivers cabin (Fall-Over-Protection-Safety)
- Tilttable cabin with full access to powertrain & hydraulics
- Large window sections with great visibility in all directions
- Large access doors with air-damper & key-lock
- Doors; sliding windows + access handles

Comfort

- Large access doors with air-damper & key-lock
- Doors; sliding windows + access handles
- Drivers seat, mech. spring suspension, high back
- Comfort seat, adjustable, sensor & 2-point belt
- Electric adjustable work console (up-down/fw-rev)
- Work console; lift levers, controls, lamp buttons etc
- Inside rear view mirrors (right and left side)
- Interior lights with fade away function
- Fully adjustable steering wheel incl tilt function
- Power steering wheel with steer knob

Controls

- Electric levers for mast, tilt & forks
- Auto rev-up accelerator at lifting / tilting / fork position
- Electric accelerator pedal (hanging)
- Double brake pedals (L + R)
- Multi-function lever LHS (parking brake/travel direction switch)
- Combined horn and blinker lever
- Warning - hand brake (on/off) leaving seat

Climate

- ECHV, electronic controlled heating & ventilation
- Powerful cab heater, power 10 kW (34.100 Btu)
- Strong AC cooling unit, power 14.0 kW (47.700 Btu)
- High-capacity ventilation unit - max air flow 483 m3/h
- Multiple individual blowers (8x upwards / 2x downwards)
- Fresh air and recirculation filter (replaceable)

- Double wipers / washers on front window (larger area)
- Single wipers / washers on roof and rear windows
- Interval wiper functions on front, roof and rear windows

Information Systems

- Kalmar CanBus controls with 4,3" monitor
- Danfoss controls DM430E in RAM mount
- Menu controller with toggle wheel & push buttons
- Programmable settings and full monitoring of all main systems

ECO Drive Modes (EDM):

- Power mode
- Normal mode (default setting)
- Economy mode

Operator menu:

- System voltage
- Actual gear
- Engine rpm
- Travelling speed (km/h or m/h)
- Combined hydraulic and brake oil temperature
- Transmission oil temperature
- Engine oil pressure (Volvo)
- Engine oil pressure only (Cummins)
- Engine coolant temperature
- Clock and date
- Operating time (hours)
- Service time indicator (hours)
- Electronic weight scale functions
- Status of heating system & AC system
- Fuel level (diesel and optional AdBlue)
- Est. operating time before empty tank (hour/min)
- Service indicator
- Trip computer / statistics

Various warning lights & signals:

- Charging battery
- Low brake pressure
- Failure indicator
- High engine coolant temperature
- Low engine coolant level (not on Cummins)
- Low engine oil pressure
- Preheating engine
- Transmission oil temperature
- Low fuel level (incl AdBlue)
- Hydraulic and brake oil temperature
- Low washer fluid level

Indicator lamps:

- Direction indication
- Parking brake

Fleet Management

- Equipped with telemetric hardware for Kalmar Insight

Colour

- Cabin: Iron-Grey RAL 7011
- Chassis, tanks & mudguards: Red RAL 3000
- Boom, attachment & axles: Black RAL 7021
- Rims: Iron-Grey RAL 7011

Documentation and Decals

- Load chart inside cabin
- Machine data sign on chassis incl. load chart
- Warning, tyre pressure & oil pressure stickers
- Information & levers/joystick stickers
- Fuse diagram
- Instruction manual
- Maintenance manual
- Spare parts catalogue

Warranty

- Kalmar standard warranty: 12 months / 2.000 hours

Options

Chassis

- Models with standard and short wheelbases
- Anti-slip strips: mudguards, tanks & lamp brackets
- Extra mud flaps (front and rear)
- Steel grid protections: fender, mast & rear

Wheels (Tyres and Rims)

- Spare wheels, tyres and rims of various brands
- Diagonal and radial tyres of well known brands
- Diagonals Continental CraneMaster 21,00 x 35"
- Diagonals Continental GeneralTyre 24,00 x 35"
- Other brands up on request

Drivetrain

- DANA Automatic transmission LTE-30500 (5+3 gears / with lockup)
- Volvo TAD-1152-VE (10,84 lit, 285 kW, 1938 Nm, EU3 / Tier 4-Final)
- Volvo TAD-1182-VE (10,84 lit, 285 kW, 1938 Nm, EU5 / Tier 4-Final)
- Auto engine & ignition stop, after 5 min idle
- Air intake filter, with Pre-Cleaner, raised air intake
- Start/stop function (for Volvo engine only)

Hydraulics

- Extra hydraulic function including hoses (per function)
- Push-button hydraulic function via magnet valve
- Quick release couplings 'aerogrip' 1/2" (per function)
- Individual fork positioning including 5th hydraulic function
- Hydraulic accumulator for lifting funitcion
- Hydraulic accumulator for lifting function "auto on/off"
- Hydraulic oil heater 1 kW (single or double)
- Other Tilt angles up on request

Lifting Mast

- Duplex Standard (no FL); lift heights 3.00 - 7.00 m
- Duplex Freelift (full FL); lift heights 3.00 - 7.00 m
- Simplex; lift heights 1.50 - 4.00 m
- Other lift heights / closed heights upon request

Fork Carriage

- Attachments: carriage sides, chain brackets & hoses
- Attachment of various brands for factory integration
- Other carriage width upon request

Forks

- See fork dimensions under Specifications
- Length: 2400 up to 3000 mm in steps (special)
- Other cross sections upon request
- Tapering: various optional tapering / short or full taper
- Fork Shaft System; hook-on type / forks, coil ram or attachment
- Kissing forks with chamfer inside/outside (integral roller-type)
- Kissing forks with chamfer inside/outside (FSS hook-on type)

Attachment

- Various attachments available:
 - Coil ram
 - Rotator
 - Steel magnet
 - Mounting of attachments
 - Other attachments up on request

Electrical System (24V)

- Tuner FM-AM, RDS, MP3, USB, Bluetooth, Stream
- Tuner FM-AM, RDS, MP3, USB, Bluetooth, Stream / DAB
- Power sockets: 2x24V and 2x12V (in door columns)
- Power sockets: 2x24V / 1x12V / 2xUSB 5V
- Electric air pressure horn
- Reverse alarm (beeping or white noise - multi frequency)
- Protection against chain slack (electronics)
- Mast with automatic vertical function (auto-tilt)

Lamps

- 2 extra LED working lights - in mast (FW)
- 2 extra LED working lights - rear on cabin (FW)
- 4 extra LED working lights - rear on cabin (mix)
- 6 extra LED working lights - rear on cabin (mix)
- 2 extra LED working lights - front on cabin roof
- 1 extra LED working lights - between tilt cylinder
- 2 high/low beam Halogen working lights (repl LED)
- 1 LED rotating warning beacon (on adjustable pole LHS)
- Blue safety light, rearward or forward
- Red safety light, rearward or forward
- Red safety zone light, Left and Right direction
- Rotating beacon LED, activated via reverse gear
- Other combination up on request
- 1 rotating warning LED-beacon
- Buzzer when reversing (reverse alarm)
- 2 LED head lights on front fenders (one beam)

Safety functions

- Overload indication for lift/tilt incl. speed restriction
- Speed limitation; default 15 km/h (set by technician)
- Speed limitation at specified load (set by technician)
- Speed limitation at specified lift height (set by techn.)
- Speed restriction set by customer in display; default 15 km/hv
- Tyre pressure monitoring system (TPMS / Bluetooth)
- Alcolock Draeger in cabin

Cabin EGO

Structure

- Globetrotter cabin +200 mm higher, roof 12 mm (repl 6 mm)
- Elevated cabin 300 mm
- Rotatable Driver Seat, electric 180 deg (to the left)
- Turnable Driver Seat, manual 55 deg (to the right)
- Steel grid protection for front window
- Steel grid protection for roof window
- Door opening holder (left side and / or right side)
- Flat front window with steel profiles, tinted and laminated
- Roof window 12 mm (repl standard 6 mm)
- Electric cabin tilt pump (up/down)
- Electric heated mirrors, front fender/standard pos
- External cabin reverse mirrors (2x)
- External cabin reverse mirrors (2x) with heating
- Electric heated + adjustable mirrors, front mudguards

Comfort

- Air cusioned driver seat with horizontal suspension
- 3-point seat belt
- Extended seat backrest
- Headrest for driver's seat
- Armrest adjustable left side
- Seat heating
- Seat cover in vinyl
- Leather reinforced seat, high backrest, 3-point belt and heating
- Grammer Actimo XL, air cushion, heating, high back, 2-point belt
- BE-GE 3100, air cushion, heating, airvent, high back, 2-point belt, leather reinforced seat
- Isringhausen 6830KA/880, air cushion, heating, high back, 2-point belt
- Extra trainer seat incl. 2-point belt
- Bracket for terminal and monitor (RHS)

Controls

- Travel direction button on 1st lift lever (F-N-R)
- Electronic joystick (EGO)
- Electronic lever steering (without feedback)
- Electronic mini-wheel steering (no feedback)

Climate

- ECC, electronic heating, cooling (AC) & ventilation
- Tinted windows including laminated front window
- Sun visors front, roof and rear windows

Additional Equipment

- Enhanced Safety Package
 - Speed limitation default 15 km/h or free (set by technician)
 - Blue safety light backwards via back alarm
 - Rear warning radar (for reverse camera/monitor in cabin)
 - Seat belt interlock (active before driving - seatbelt on)
- Semi-automatic fire suppression system (DAFO Forrex)
- Fire extinguisher 6 kg, powder (LHS / behind foot steps)
- Tool kit
- Central greasing system (14-18-24 grease points)
- Tilt indicator of mechanical type
- Tilt indicator of electronic type (in display)
- Electronic weight indicator in cabin control monitor
- Heat protection kit (incl hoses)
- Heat protection mechanical kit
- Wheelnut protection
- Additional equipment for roadtraffic (LGF-sign)

Camera safety

- Modular full HD solutions (1920x1080p)
- Extra front mast camera - to cab monitor
- Extra front carriage camera - to cab monitor
- Radar warning sensors rear (2x) to cab monitor
- Monitor 7in Quad, max 4 connections (repl Dual)
- Monitor 10in Quad, max 4 connections (repl Dual)
- DVR recorder, up to 4 channels, with SD-card (128 GB)
- 360 birdview camera solution (not with sliding cabin)

Information Systems

- VDI - Vehicle Data Interface

Fleet Management (Kalmar Insight)

- Insight licence (only certified countries)
- Insight Driver Monitor (RFID reader + 10 driver tags)
- Insight extra driver tags (10 tags)

Colour

- Other RAL colour than standard, chassis
- Special and multiple colours, chassis
- Other colour than standard, striping foil
- Reinforced anti-corrosion protection

Documentation & Decals

- Extra set of documentation
- Workshop manuals
- Load chart lbs/inch in cab & sign "no riders"
- Documentation on memory stick

Training

- Training packages (driver, service, maintenance, software)
- Contact Kalmar Training Centre for more information

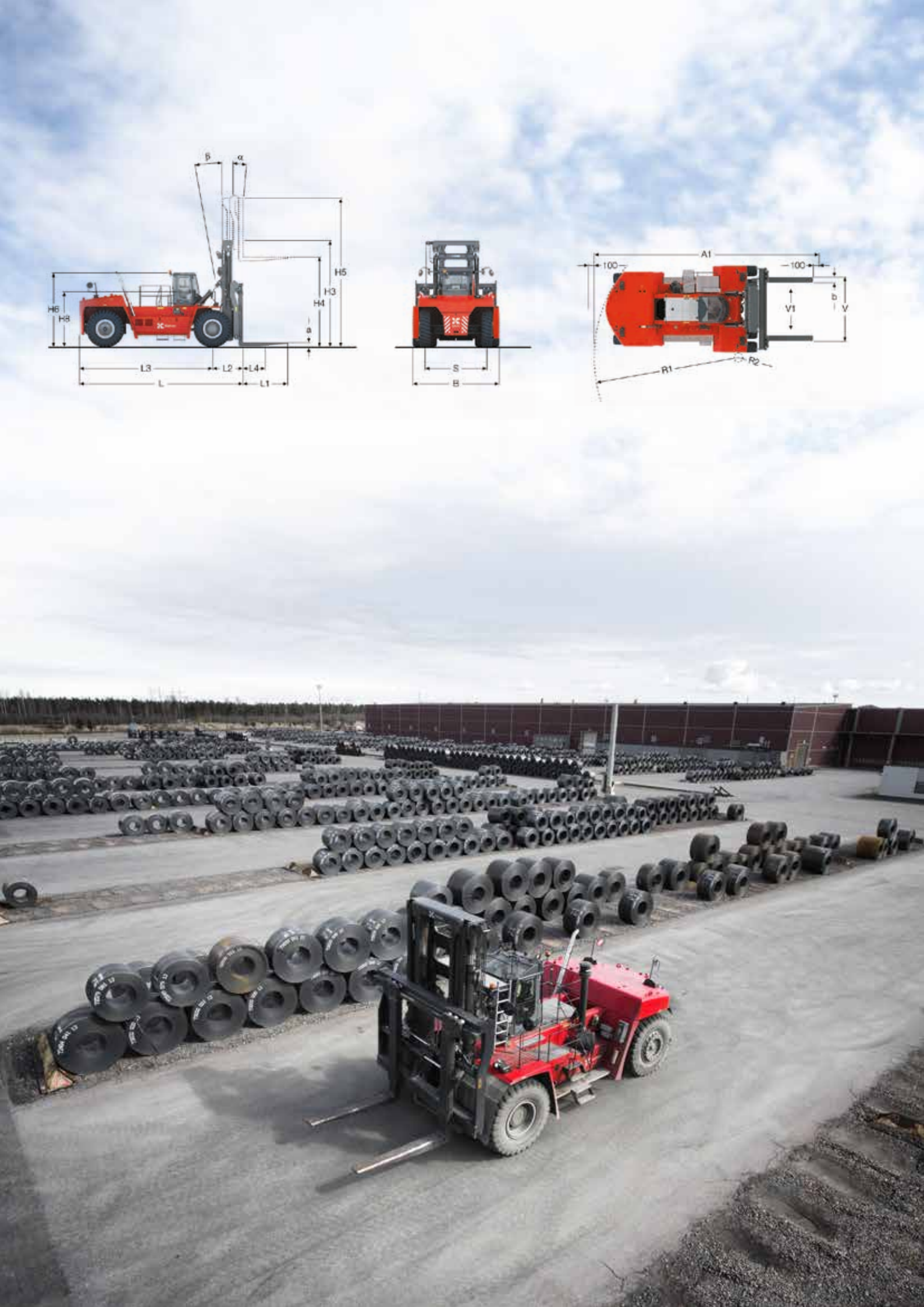
Warranty

- Additional warranty packages available:
 - Gold (complete forklift): max 5 yr/10.000h
 - Silver (drive line): max 8 yr/16.000h
 - Bronze (structural parts): max 10 yr/20.000h
- Contact Kalmar for more information

Specifications

MODELS LIFTING CAPACITY	Models			DCG600- 15	DCG650- 12	DCG700- 15	DCG750- 15	DCG800- 15	DCG850- 12
			kg	60 000	65 000	70 000	75 000	80 000	85 000
FORKLIFT DIMENSIONS		Rated capacity							
		Load centre distance	L4	mm	1500	1200	1500	1500	1200
		Truck length (to fork face front)	L	mm	8770	8770	10610	10610	10610
		Distance, centre drive axle - fork face front	L2	mm	1615	1615	1705	1705	1705
		Wheelbase	L3	mm	5750	5750	7500	7500	7500
		Truck width (over tires)	B	mm	4670	4670	4850	4850	4850
		Roof height cabin (basic forklift)	H6	mm	4000	4000	4150	4150	4150
		Seat height EGO	H8	mm	3000	3000	3150	3150	3150
		Height / width, max (with tilted cabin)	T1 / T2	mm	4450 / 4670	4450 / 4670	4600 / 4850	4600 / 4850	4600 / 4850
		Track (c-c), front / rear	S1 / S2	mm	3360 / 3300	3360 / 3300	3385 / 3300	3385 / 3300	3385 / 3300
LIFTING EQUIPMENT		Turning radius, outer / inner	R1 / R2	mm	8200 / 3700	8200 / 3700	10250 / 3700	10250 / 3700	10250 / 3700
		Aisle width min. at 90° driving with forks	A1	mm	12415	12415	14560	14560	14560
		Ground clearance, min		mm	300		300		300
	Duplex Standard	Lifting height¹	H4	mm	4000		4000		4000
		Mast height, min	H3	mm	5750		6025		6025
		Mast height, max	H5	mm	7750		8025		8025
		Mast tilt, forward – backward	α – β	°	10-10		5-10		5-10
	Forks	Width x Thickness	b x a	mm	300 x 180		300 x 210		300 x 210
		Length	l	mm	2400		2400		2400
		Forks position, outside width, min-max.	V	mm	1740 / 3740		1740 / 3740		1740 / 3740
		Forks sideshift, max stroke at opening (c-c)²&⁴	V1 – V	mm	500 - 2740		500 - 2740		500 - 2740
		Fork carriage width²&⁴	b3		4400		4400		4400
WEIGHTS	Service weight³		kg	89 500	91 000	91 000	93 800	96 600	97 700
	Axle load front	Unloaded	kg	47 000	47 000	52 000	52 000	52 000	52 000
		At rated load	kg	139 500	143 800	151 900	151 900	166 200	169 900
	Axle load rear	Unloaded	kg	42 500	44 000	39 000	41 800	44 600	45 700
		At rated load	kg	10 000	12 200	9 100	9 700	10 400	12 800
WHEELS	Wheels	Number of wheels, front – rear (x = driven)				4 – 2			
	Tyres	Pneumatics, type / pressure (front - rear)				Diagonal / 1.0			
		Dimensions, front – rear	tum			21.00 x 35" - 21.00 x 35"	24.00 x 35" - 21.00 x 35"	24.00 x 35" - 21.00 x 35"	
	Rims	Dimensions, front – rear	tum			15.00 x 35"/3.0 - 15.00 x 35"/3.0	17.00 x 35"/3.5 - 15.00 x 35"/3.0	17.00 x 35"/3.5 - 15.00 x 35"/3.0	
AXLES	Steer axle	Manufacturer, type - designation			Kalmar steer axle / hydraulic power steering / double acting single cylinder				
	Drive axle	Manufacturer, type - designation			Kessler D111-P447/PL545 / drive axle with differential and hub reduction				
	Service brakes	Type – affected wheels			Oil cooled wet disc brakes (WDB) / drive wheels				
	Parking brake	Type – affected wheels			Single dry disc / spring activated - hydraulic release / drive wheels				
HYDRAULICS	Hydraulics	System type / pump type			Load-sensing / power-on-demand / piston pumps				
	Oil pressure	Max working pressure	MPa	21.0	23.0	18.0	19.5	21.0	22.0
	Tank	Oil volume	Lit			550			
		Fuel tank, capacity	Lit			490			
		AdBlue tank, capacity	Lit			35			

1. Technical data: mast Duplex Standard with 4000 mm lift height.
2. Technical data: fork carriage with integral sideshift / fork position (SSFP).
3. Service weights / axle loading: values with standard configuration.
4. Other lift mast, carriages and forks or attachments upon request.



Drivetrain

MODELS	Models		DCG600-850	DCG600-850
	Wheelbase	mm	5750 - 7500	5750 - 7500
ENGINE	Drive motor, manufacturer - type designation ¹		Volvo TAD-1152-VE	Volvo TAD-1182-VE
	Fuel types, motor type		Diesel / HVO / 4-stroke	Diesel / HVO / 4-stroke
	Turbo charger / cooling		Turbo (FGT) + Intercooler	Turbo (FGT) + Intercooler
	Engine after treatment type ²		No AdBlue, DOC, SCR or DPF	With AdBlue, DOC and ASC
	Diesel particle filter (DPF)		No DPF	With DPF
	Emission standards		EU Stage IIIA / EPA Tier 3	EU Stage V / EPA Tier 4-Final
	Rated power / at revs (ISO 3046)	kW/hp - rpm	285 / 1700	285 / 1700
	Peak power / at revs (ISO 3046)	kW/hp - rpm	285 / 1700	285 / 1700
	Peak torque ISO 3046 / at revs	Nm / rpm	1938 / 1300	1938 / 1300
	Number of cylinders / displacement	cm³	6 / 10.840 (661)	6 / 10. (661)840
GEARBOX & MISC	Fuel consumption		l/h	16-22
	Manufacturer's type designation		Dana LTE-30500	Dana LTE-30500
	Clutch, type		Torque converter with Lock-up clutch	Torque converter with Lock-up
	Gearbox, type		Hydrodynamic Powershift	Hydrodynamic Powershift
	Eco Drive Mode (EDM) drivetrain setting		3 modes / Eco, Normal & Power	3 modes / Eco, Normal & Power
	Numbers of gears, forward / reverse		5 / 3	5 / 3
	Alternator, type / power	W	AC / 3080 (28V x 110A)	AC / 3080 (28V x 110A)
	Starting battery, voltage / capacity		V / Ah	2×12 / 145

- Notes:
- Regular diesel based on EN590 (ASTM D975 no. 2-D)
Synthetic / paraffinic diesel based on EN 15940.
 - AdBlue / Diesel Exhaust fluid (DEF) doser unit
Diesel Oxidation Catalyst (DOC)
Diesel Particulate Filter (DPF)
Selective Catalyst Reduction (SCR)
Ammonia Slip Catalyst (ASR)
 - With Eco Drive Mode (EDM) drivetrain settings included.
Eco (1600 rpm), Normal (1800 rpm) and Power (2200 rpm).

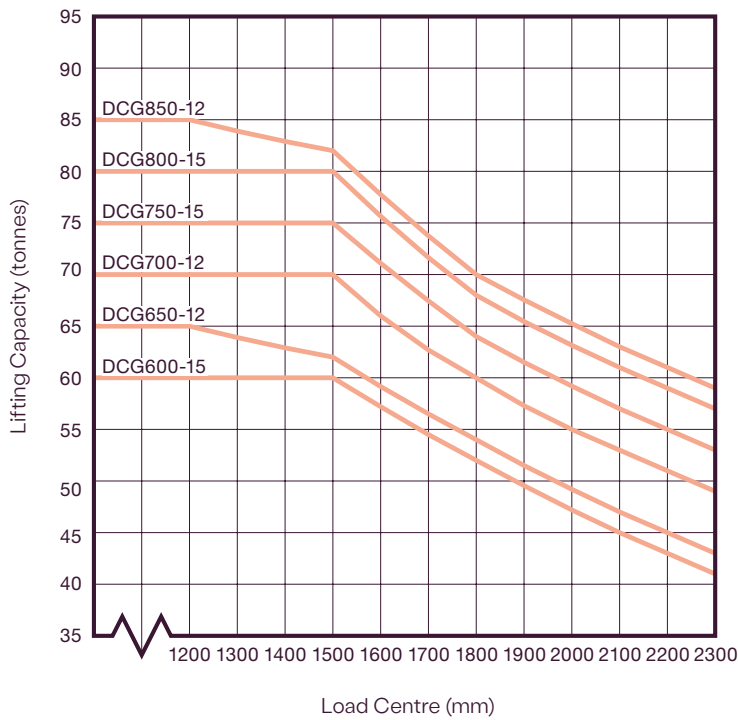
Performance

MODELS	All wheelbases			DCG600-15	DCG650-12	DCG700-15	DCG750-15	DCG800-15	DCG850-12
	Volvo Engine			TAD-1152-VE (EU Stage IIIA / EPA Tier 3) / TAD-1182-VE (EU Stage V / EPA Tier 4-Final)					
SPEEDS	Travel speed, forward - reverse	Unloaded / at rated load	km/h	25 - 18 / 23 - 17		26 - 19 / 24 - 17		26 - 19 / 24 - 17	
	Lifting speed	Unloaded / at rated load 70%	m/s	0.25 / 0.20		0.19 / 0.18		0.19 / 0.18	
	Lowering speed	Unloaded	m/s	0.28 / 0.31		0.21 / 0.23		0.21 / 0.23	
POWER	Gradeability, max	Unloaded	%	67	66	59	57	54	54
		At rated load	%	34	33	29	27	26	25
	Gradeability, at 2 km/h	Unloaded	%	37	36	33	32	31	31
		At rated load	%	20	19	17	16	15	14
	Drawbar pull		kN	510		510		510	
SOUND	Noise level, inside (with EDM ¹)	EN12053, LpAZ	dB(A)	72 - 75		72 - 75		72 - 75	
	Noise level, outside (with EDM ¹)	EN12053, LWAZ	dB(A)	106 - 109		106 - 109		106 - 109	
	Noise level, outside (with EDM ¹)	2000/14/EC, LWAZ	dB(A)	109 - 111		109 - 111		109 - 111	

- Notes:
- With Eco Drive Mode (EDM) drivetrain settings included.
Eco (1600 rpm), Normal (1800 rpm) and Power (2200 rpm).



Load diagram*



* Full capacity with lift height 5.00 m, masts Simplex, Duplex Standard and Duplex Freelift, carriage Sideshift / Forkposition (SS/FP) and with / without Fork Shaft System.

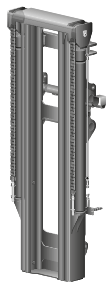
Lifting equipment

We offer a full range of duplex, triplex and free-lift equipment.*

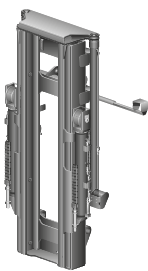
DUPLEX STANDARD (2-stage)	DCG600-650				DCG700-850			
	Lift Height	Mast Height		Free Lift	Lift Height	Mast Height		Free Lift
	H4	H3 min	H5 max	H2	H4	H3 min	H5 max	H2
	3500	5500	7250	–	3500	5525	7025	–
	4000	5750	7750	–	4000	5775	7525	–
	4500	6000	8250	–	4500	6025	8025	–
	5000	6250	8750	–	5000	6275	8525	–
	6000	6750	9750	–	6000	6775	9525	–
	7000	7250	10750	–	7000	7275	10525	–
	8000	–	–	–	8000	–	–	–
DUPLEX FREELIFT (2-stage)	DCG600-650				DCG700-850			
	Lift Height	Mast Height		Free Lift	Lift Height	Mast Height		Free Lift
	H4	H3 min	H5 max	H2	H4	H3 min	H5 max	H2
	3500	5450	7200	1750	3500	5775	7525	1750
	4000	5700	7700	2000	4000	5700	7700	2000
	4500	5950	8200	2250	4500	5950	8200	2250
	5000	6200	8700	2500	5000	6200	8700	2500
	6000	6700	9700	3000	6000	6700	9700	3000
	7000	7200	10700	3500	7000	7200	10700	3500
	8000	–	–	–	8000	–	–	–
SIMPLEX LIFT (1-stage)	DCG600-650				DCG700-850			
	Lift Height	Mast Height		Free Lift	Lift Height	Mast Height		Free Lift
	H4	H3 min	H5 max	H2	H4	H3 min	H5 max	H2
	1500	4750	4750	–	1500	5000	5000	–
	2000	5250	5250	–	2000	5500	5500	–
	2500	5750	5750	–	2500	6000	6000	–
	3000	6250	6250	–	3000	6500	6500	–
	3500	6750	6750	–	3500	7000	7000	–
	4000	7250	7250	–	4000	7500	7500	–

- Notes*:
1. Other lift heights up on request.
2. Mast heighs H3 and H5 in standard configuration (may change with tyre dimensions).
3. Duplex Freelift with lift cylinders and lift chains outside the mast profile.
Simplex with lift cylinders and lift chains outside the mast profile.

Masts

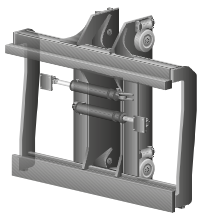


Duplex Standard
Lift height 3500 - 7000 mm

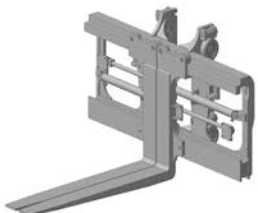


Duplex Freelift
Lift height 3500 - 7000 mm

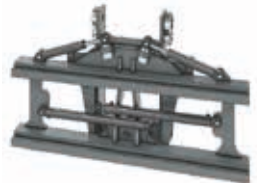
Carriages



Carriage sideshift /
fork positioning

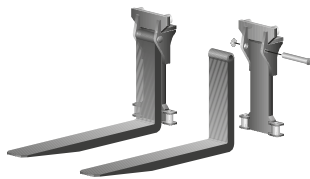


Carriage with kissing
forks for steel handling

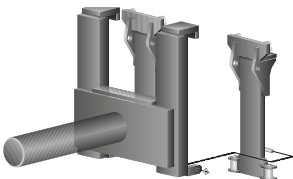


Carriage for Sideshift
/ Fork position (SS/FP)
and Centre Levelling

Forks



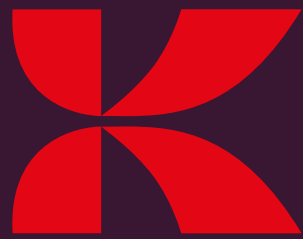
Fork shaft system
(Hook on type or roller type)



Coil ram



Forks with roller bearings
(SS/FP) and fork levelling



Kalmar

www.kalmarglobal.com

Published by Kalmar, Copyright © Kalmar Corporation 2024.
All rights reserved.

